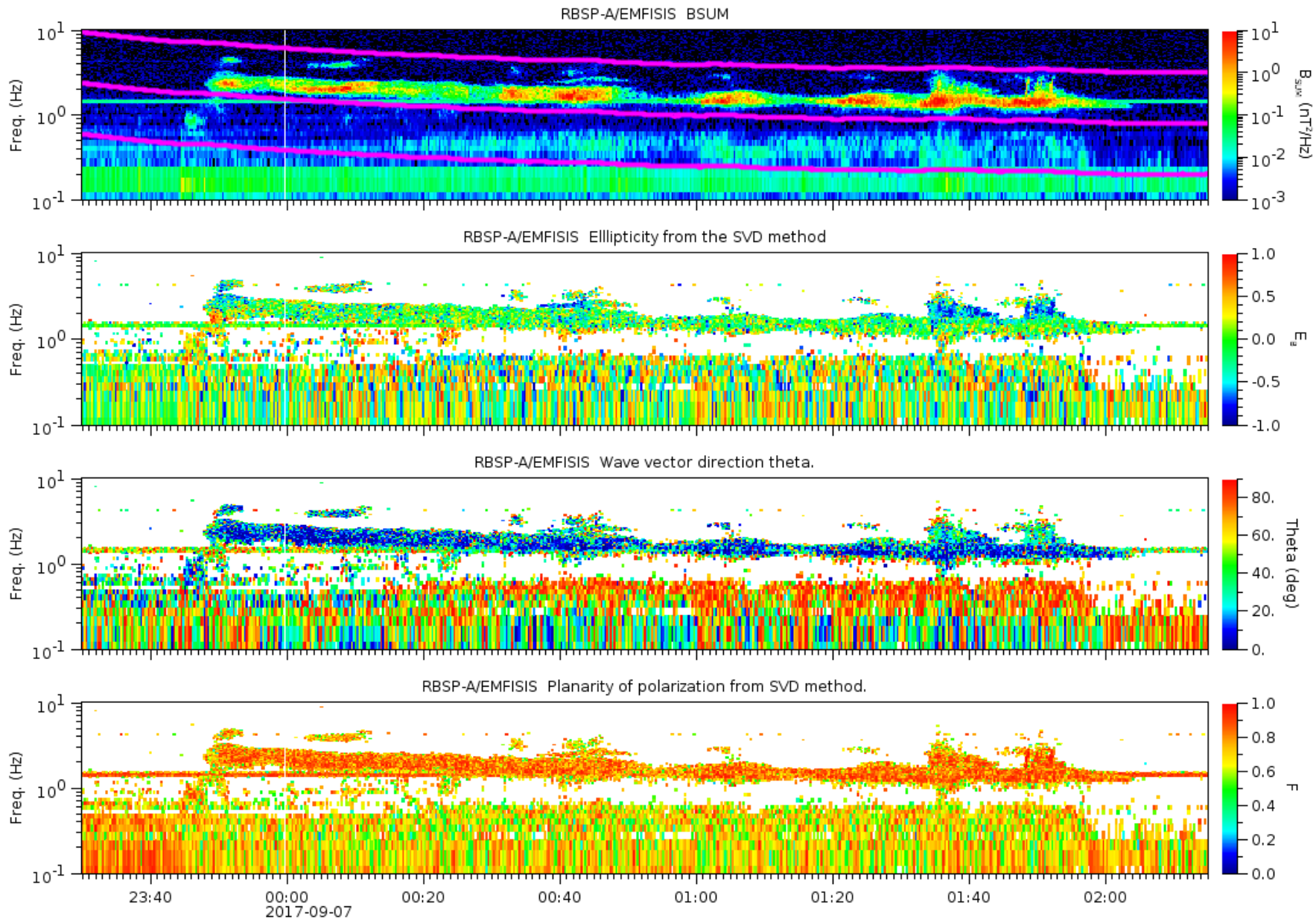


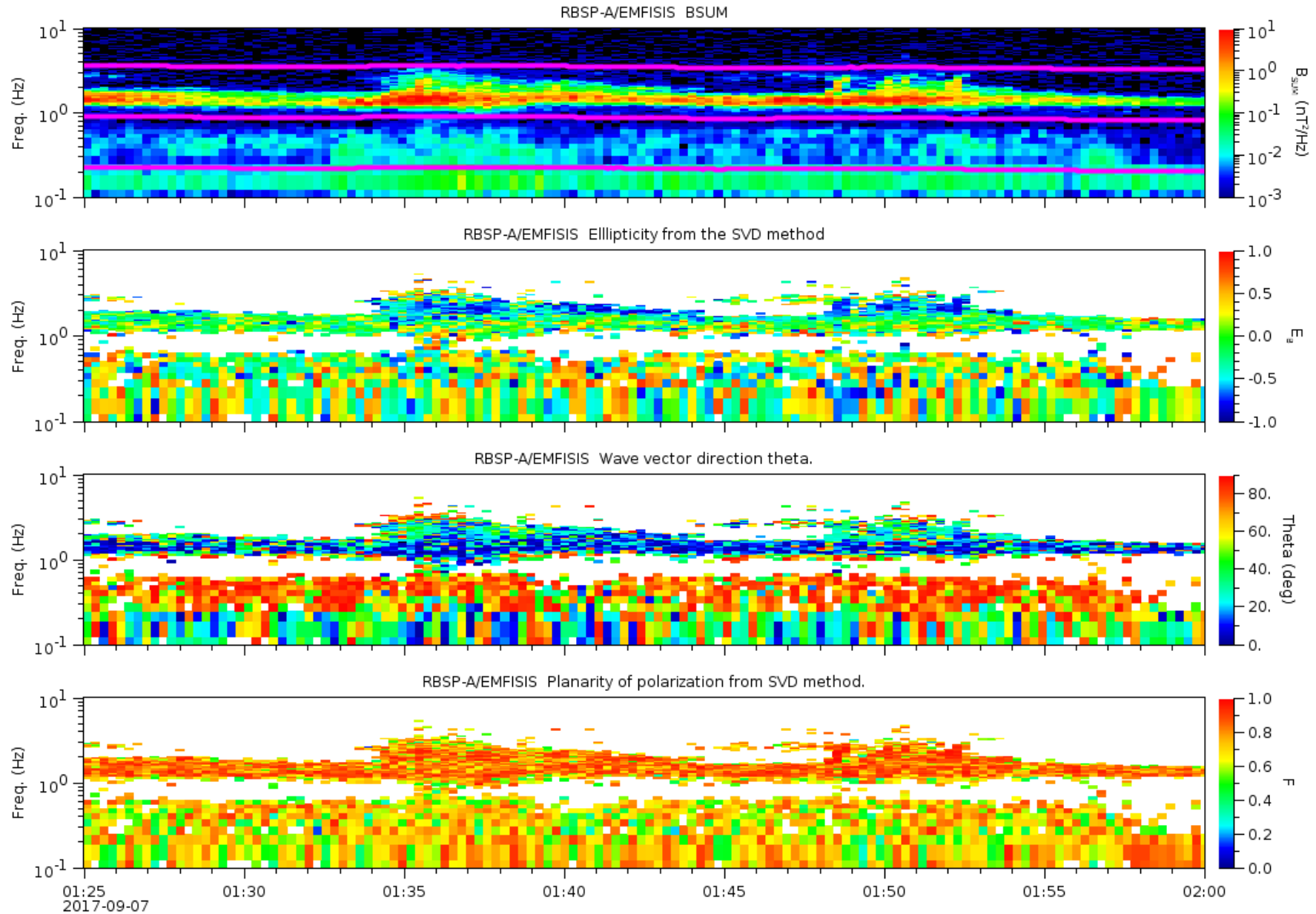
EMFISIS Fluxgate Magnetometer EMIC Waves with Rising Tones – K. Sigsbee, University of Iowa

H+ band EMIC waves started at the same time as the geomagnetic sudden impulse at 23:48 UTC on 06 September and continued until 02:03 UTC on 07 September.

PRASSADCO wave normal analysis indicates the rising tone waves were more left-handed than the ordinary EMIC waves.

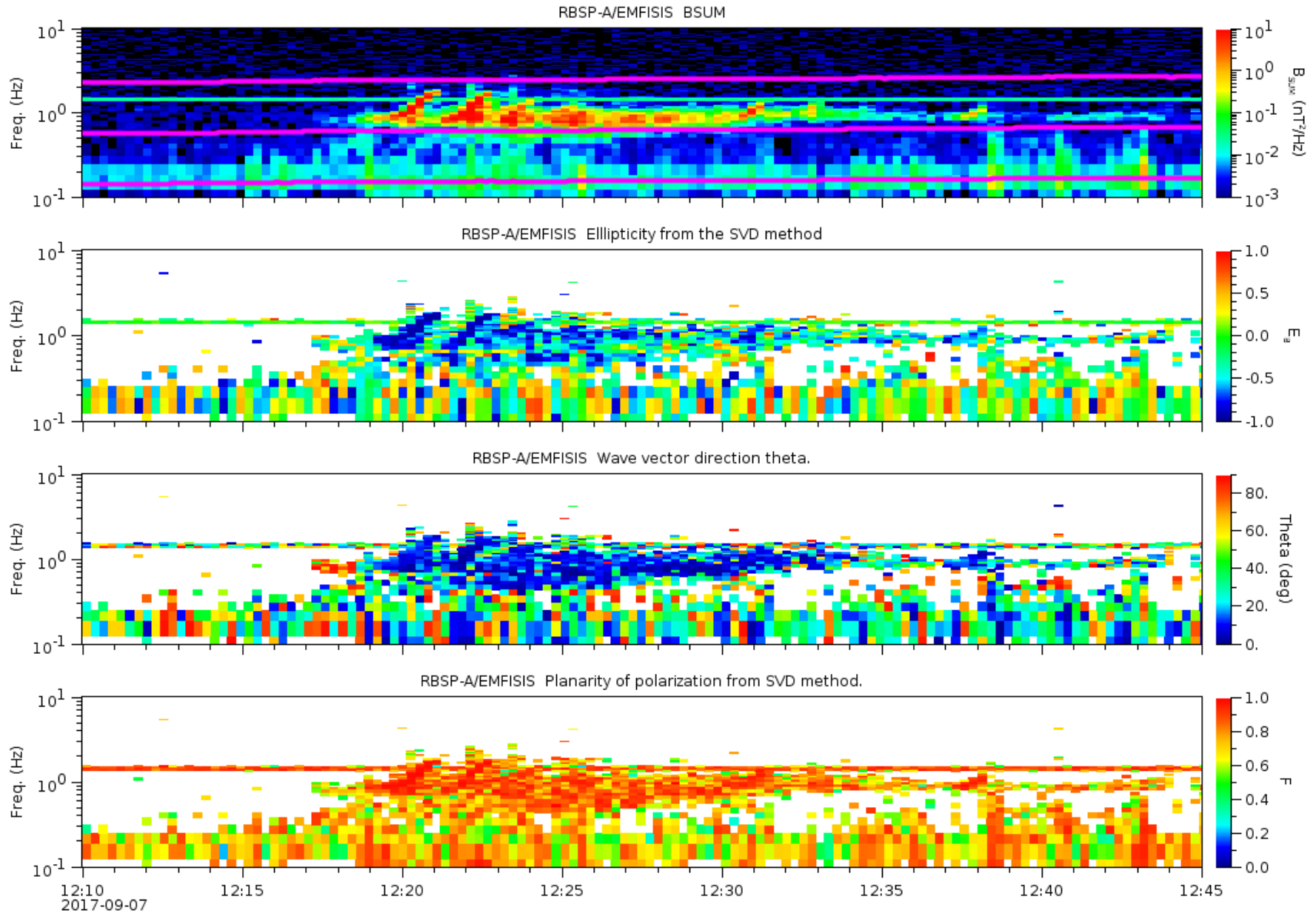


EMFISIS Fluxgate Magnetometer EMIC Waves with Rising Tones – K. Sigsbee, University of Iowa



Zoomed in view of H+ band EMIC waves from the previous slide showing an interval of rising tone triggered emissions.

EMFISIS Fluxgate Magnetometer EMIC Waves with Rising Tones – K. Sigsbee, University of Iowa



Very large amplitude H+ band EMIC rising tones were also observed on the next orbit.

PRASSADCO wave normal analysis shows the rising tones had left-hand polarization.